

Customer :

customer

Customer part :

customer part

Comment :

Comment

S1=0.57

S2=0.65

Tmax=439

Tp S2=478.0

PI=0.47

HI=87

Sample =1806.4

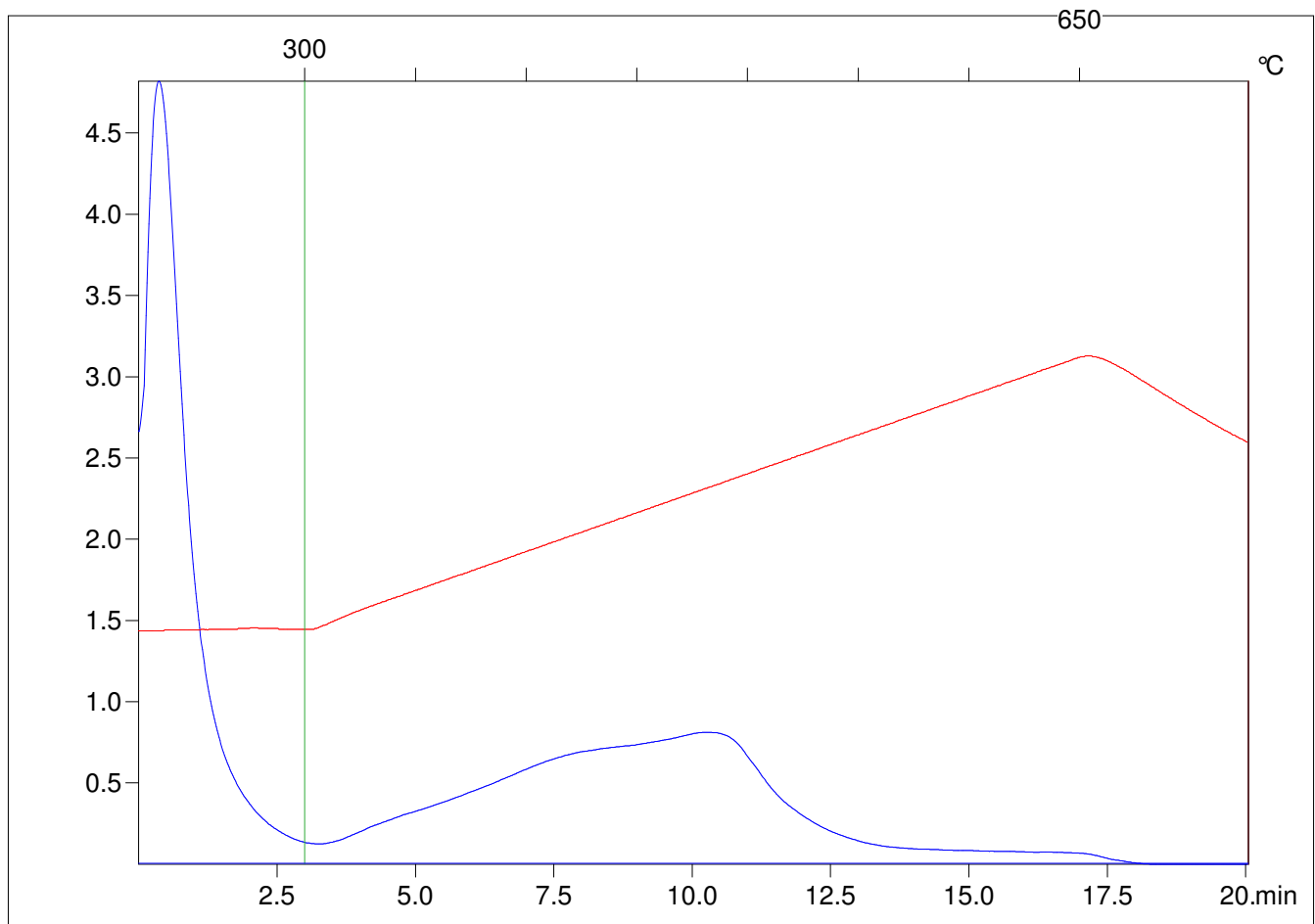
Method =Bulk Rock

Cycle=Basic

KFID(10*9)=1444

Qty =69.9

TOC=0.75



C:\VINC\PK4_1792\PK025.R00 : FID pyrolysis graphic

State

Pyro Status

Oxi Status